

CLAY PAVERS



ABOUT US

We, the ABC Klinker Group, are a family-owned business in the brick and tile industry in Germany and can look back on around 130 years of experience. Today, our ABC Klinker Group is in the fifth generation and manufactures various brick products at six locations in Germany. Our product portfolio includes facing bricks, brick slips, ceramic facades, clay pavers, clinker roof tiles and floor ceramics.

SUSTAINABILITY

We produce sustainable natural building materials as environmentally friendly as possible. For this reason, we focus on low energy consumption in production with gentle, efficient use of resources and low material consumption. The natural slate clay of the Tecklenburger Land forms the basic material of our ABC products - a valuable, genuine natural product!

VISIT OUR SHOWROOM „RINGOFEN“ IN HÖRSTEL

In our showroom, the Ringofen, Dornierstr. 11 in Hörstel, we offer you numerous suggestions and various possibilities for your house construction. For an individual consultation we are available Monday to Friday from 08.30 am to 05.30 pm and Saturday from 09.00 am to 01.00 pm. For an appointment, you can reach us by phone at +49 (0) 54 59 / 93 43 11 or by e-mail at ausstellung@abc-clinker.de.



Features of our products



Frost-resistant



Environmentally friendly



Water absorption $\leq 6\%$



Colourfast



Weatherproof



Fire behavior: euroclass A1



Standardized



Graffiti removable





Special production Lichtocker

Karen Blixens Place Copenhagen, Denmark | Format: 222 x 71 x 71 mm

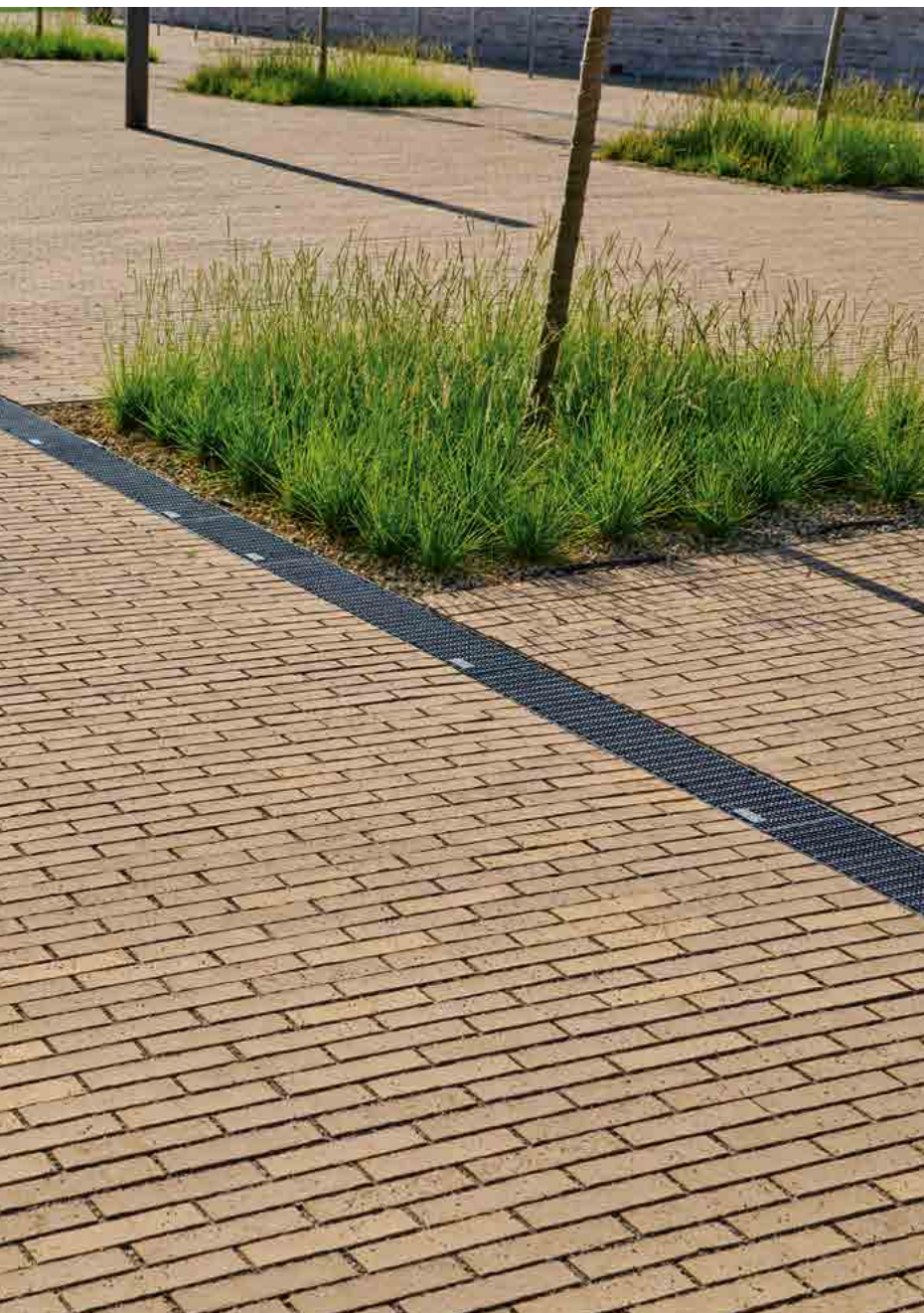




Colima beige-grey

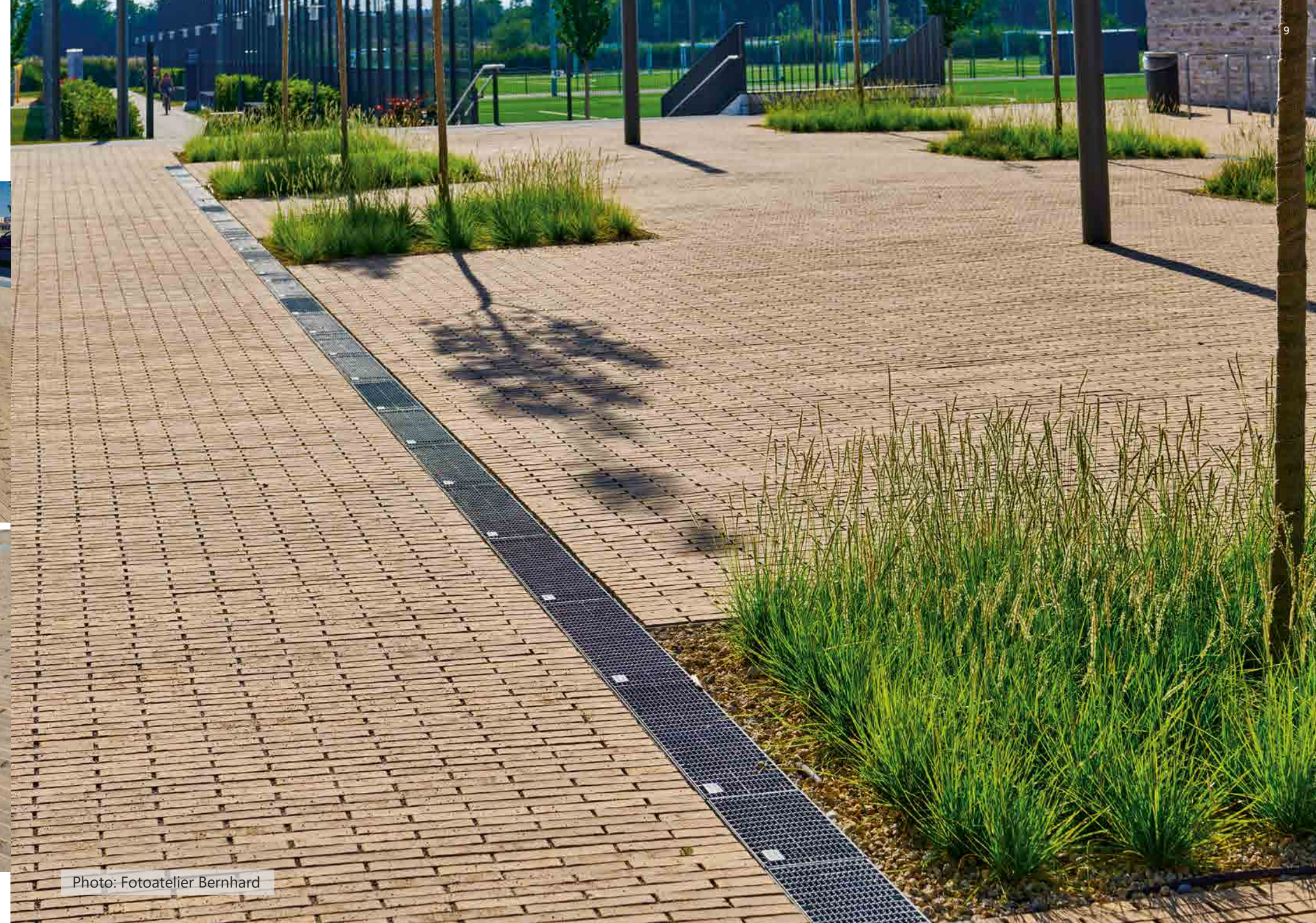
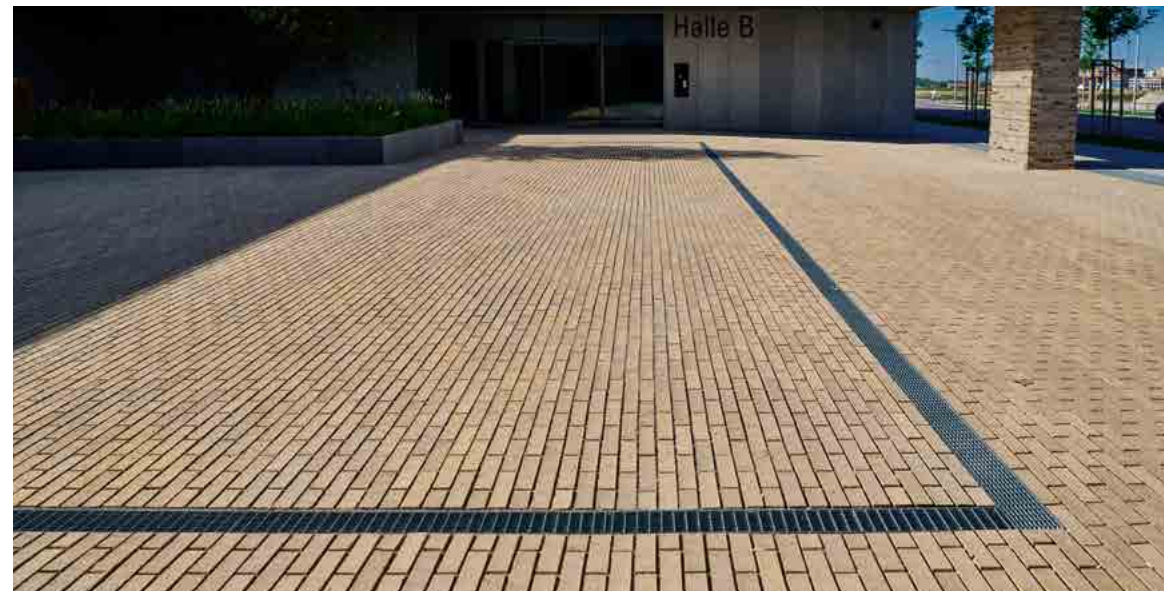


Inner courtyard Vilnius, Lithuania



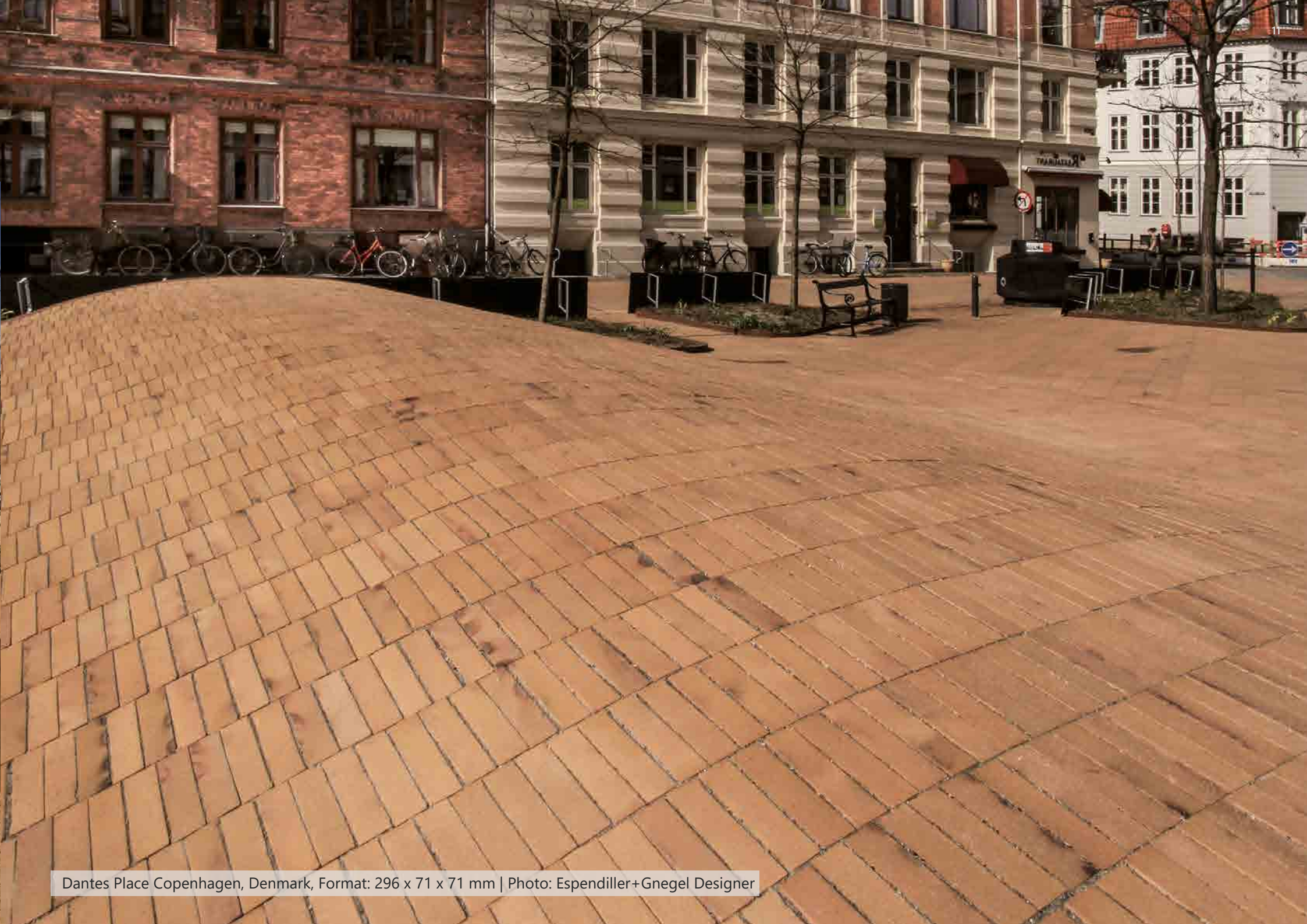
Special production Colima (Visible side with aquaterra surface)

Sports park, Munich-Freiham | Format: 240 x 90 x 52 mm





Copenhagen yellow coal



Dantes Place Copenhagen, Denmark, Format: 296 x 71 x 71 mm | Photo: Esendiller+Gnegel Designer



Copenhagen yellow coal

City Center Haren, Ems | Format: 292 x 71 x 100 mm





Mix of 5 different colours

Greve Midtbycenter, Denmark | Format: 300 x 145 x 52 mm
Colours: Light-grey, Dark-grey, Red, Brown, Genf, Beige-white-yellow





Luna lava-grey



Ceres Brewery Aarhus, Denmark



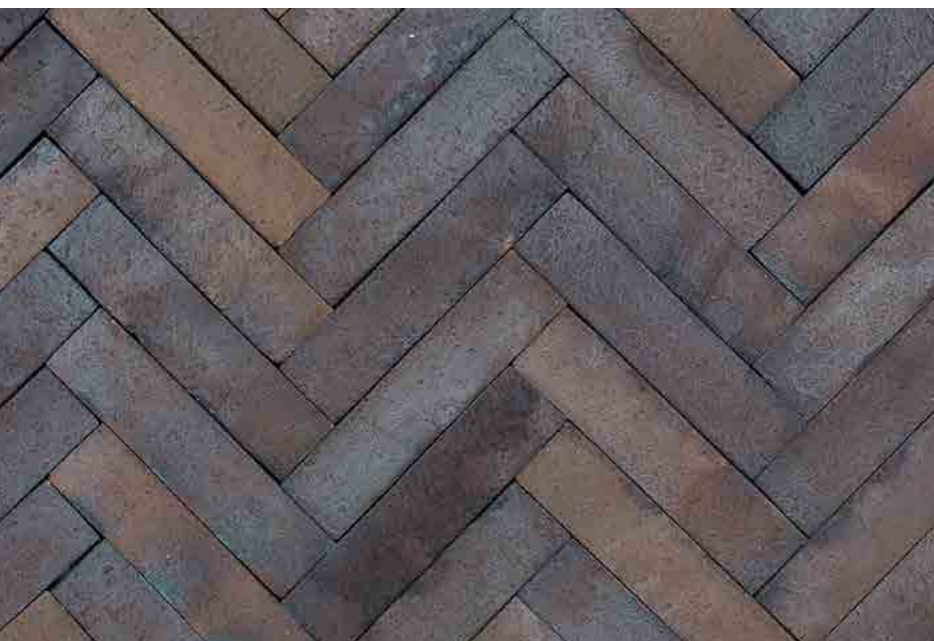
Berlin blue-anthracite



Photo: Esendiller+Gnegel Designer

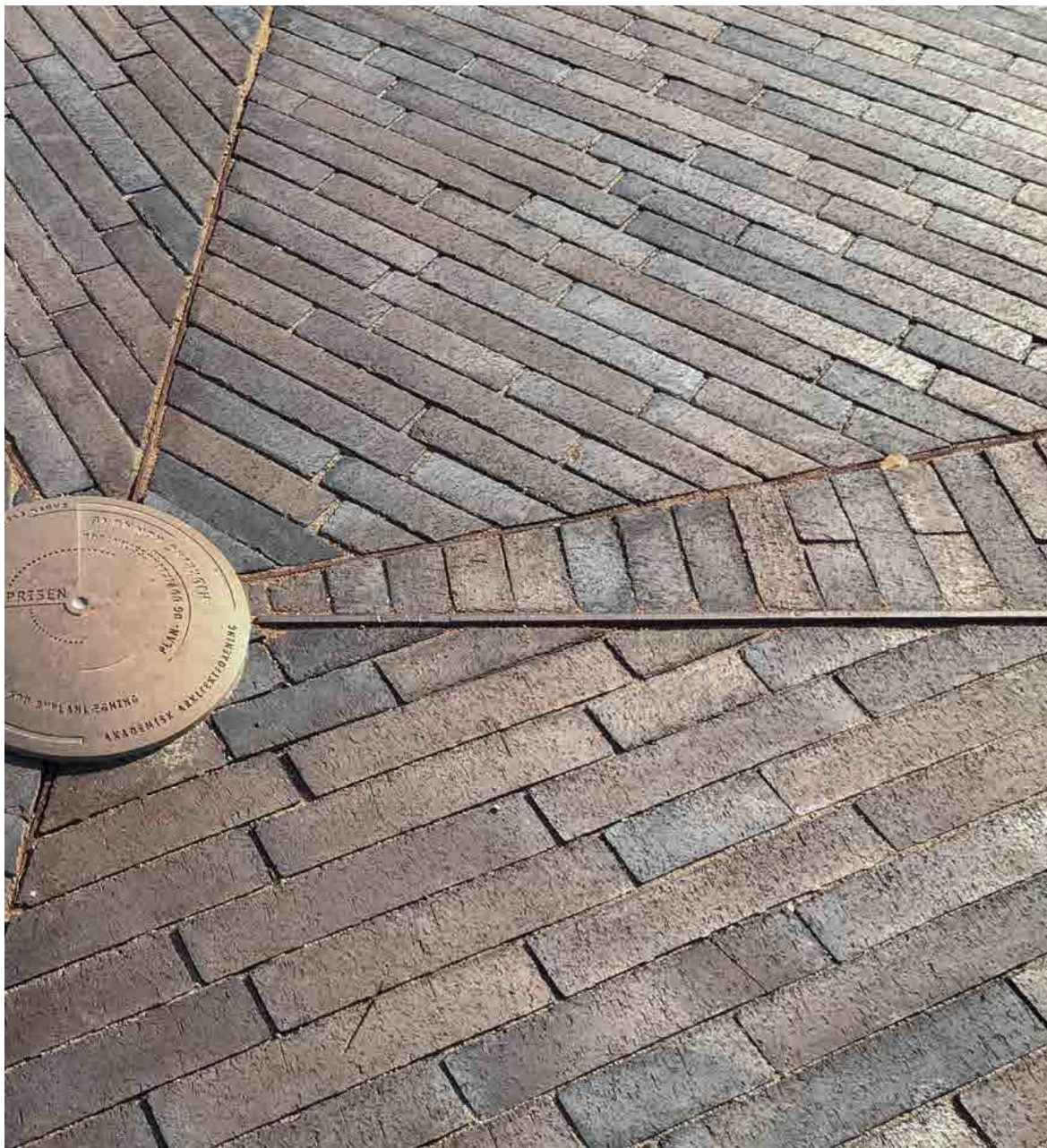
Atlantis anthracite siver-grey





Variations in colour, play of colours and proportions may be possible due to production/printing reasons.

Gotland blue-brown smelted



Vendsyssel Theatre Hjørring, Denmark | Photo: SteffenSten



Gotland blue-brown smelted

Varde Garten, Denmark | Format: 292 x 78 x 52 mm



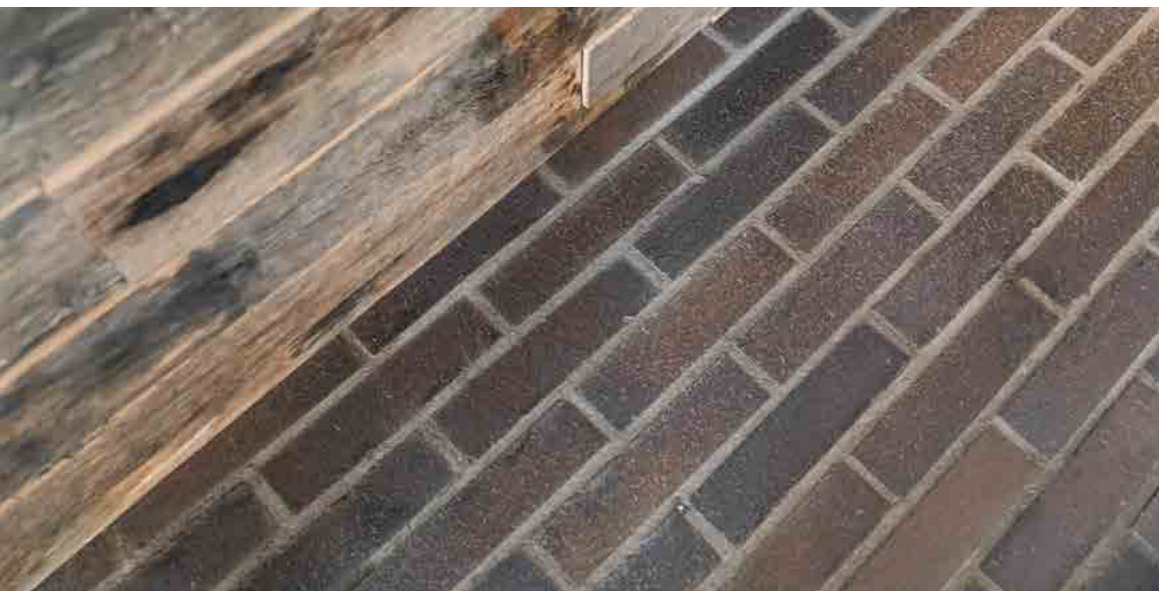
Photo: SteffenSten



Emsgalerie 400x10x35 mm

Gotland blue-brown smelted

Castle Dyk, Jüchen | Format: 292 x 71 x 25 mm (cutted)



Variations in colour, play of colours and proportions may be possible due to production/printing reasons.



Photo: Heike Skamper



Variations in colour, play of colours and proportions may be possible due to production/printing reasons.

Midnight blue

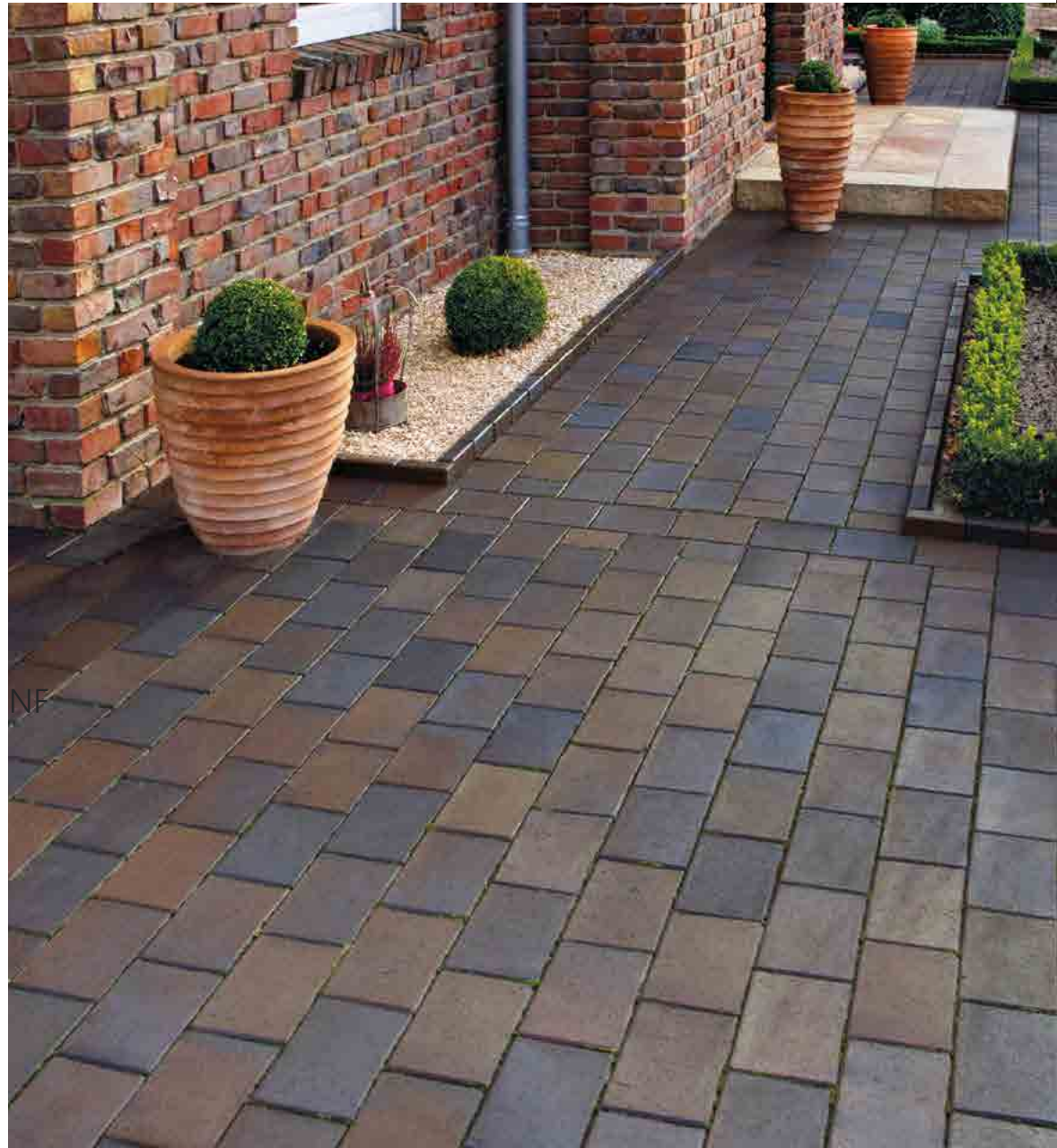
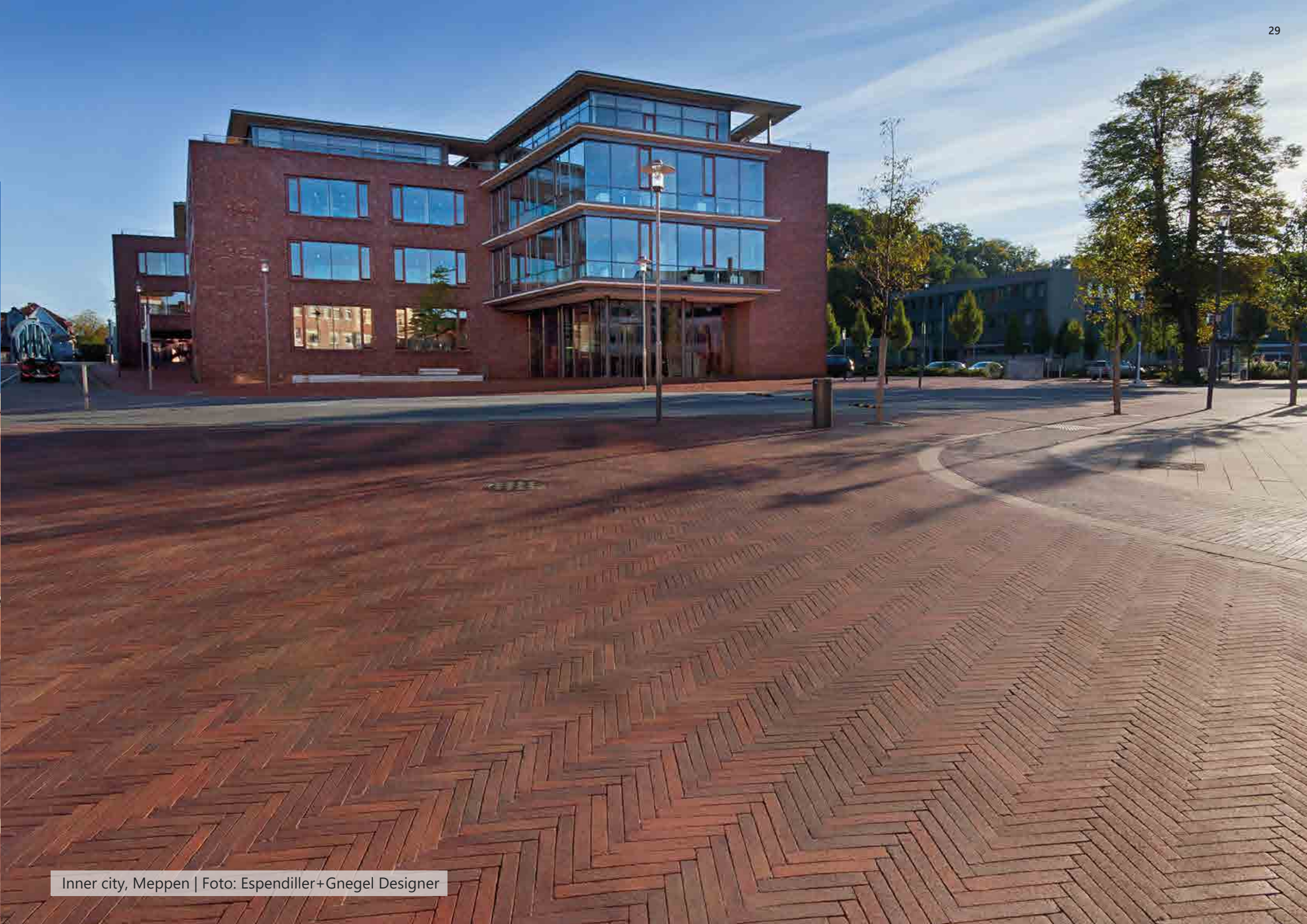


Photo: Esendiller+Gnegel Designer



Variations in colour, play of colours and proportions may be possible due to production/printing reasons.

Malmö blue-varicoloured smelted



Inner city, Meppen | Foto: Esendiller+Gnegel Designer

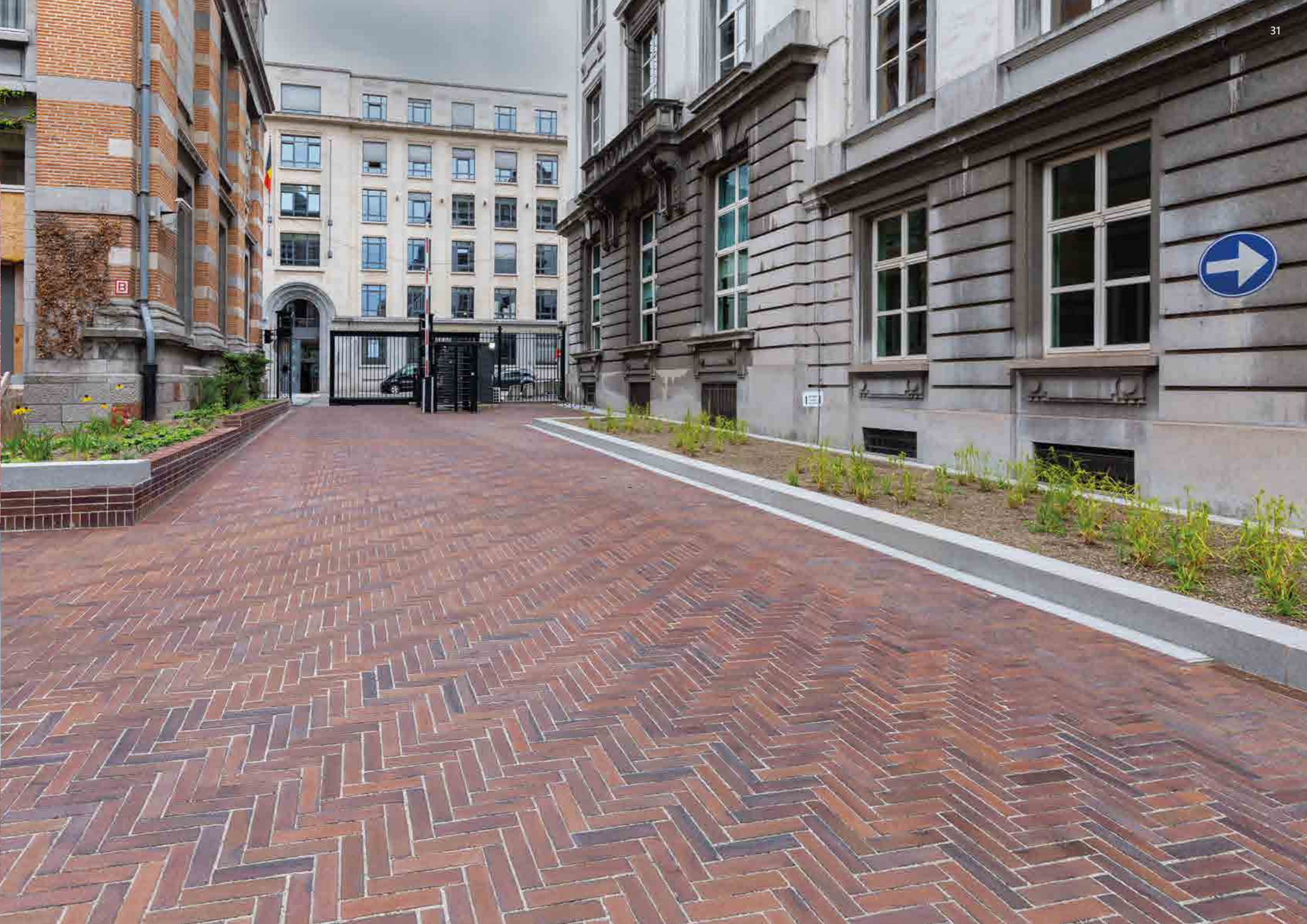


Malmö blue-varicoloured smelted

Parliament Brussels, Belgium | Format: 275 x 65 x 80 mm



Variations in colour, play of colours and proportions may be possible due to production/printing reasons.





Variations in colour, play of colours and proportions may be possible due to production/printing reasons.

Kiel heath-varicoloured

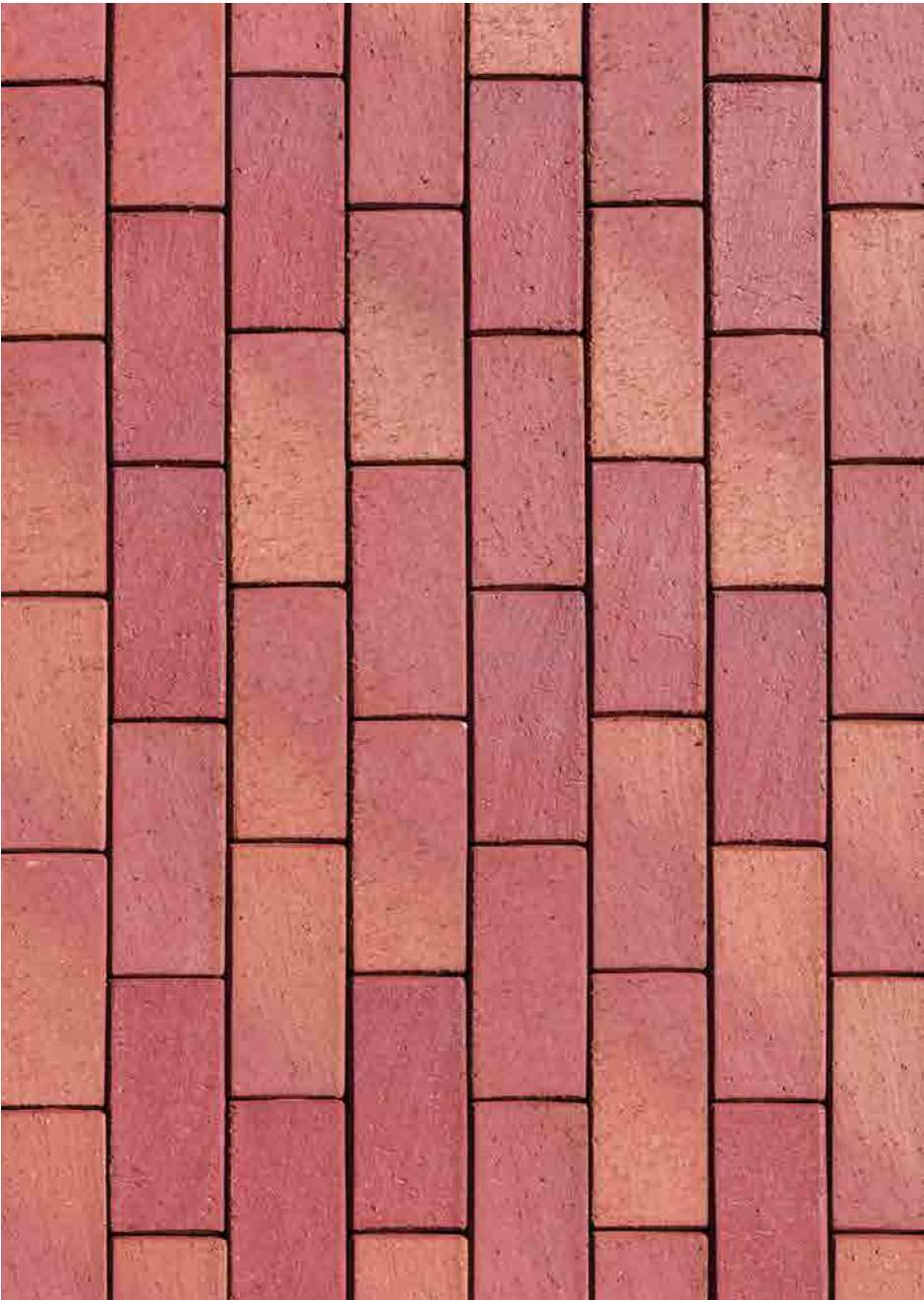


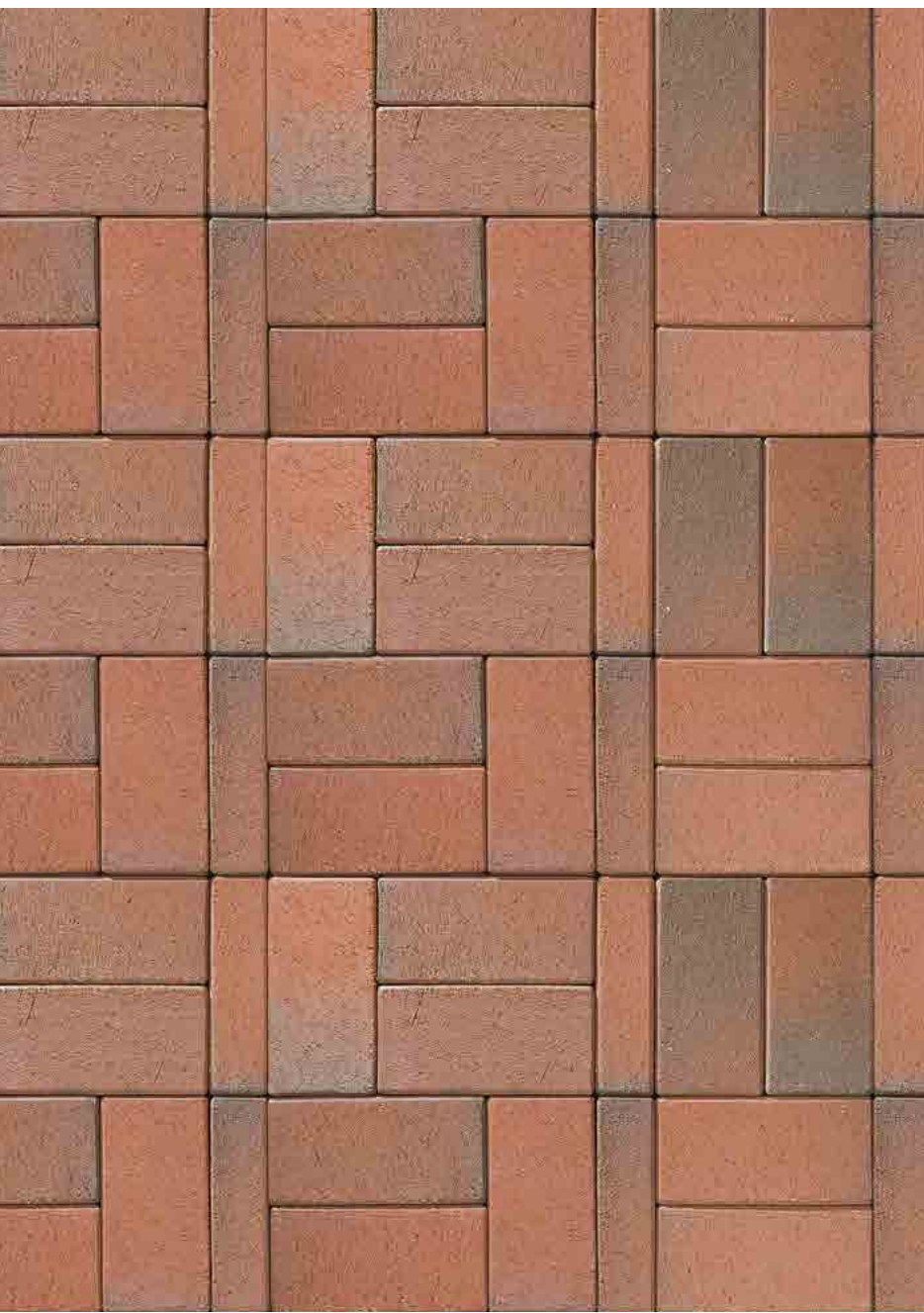
Photo: Esendiller+Gnegel Designer

Köln red-flamed



Foto: Esendiller+Gnegel Designer





Variations in colour, play of colours and proportions may be possible due to production/printing reasons.

Recker varicoloured

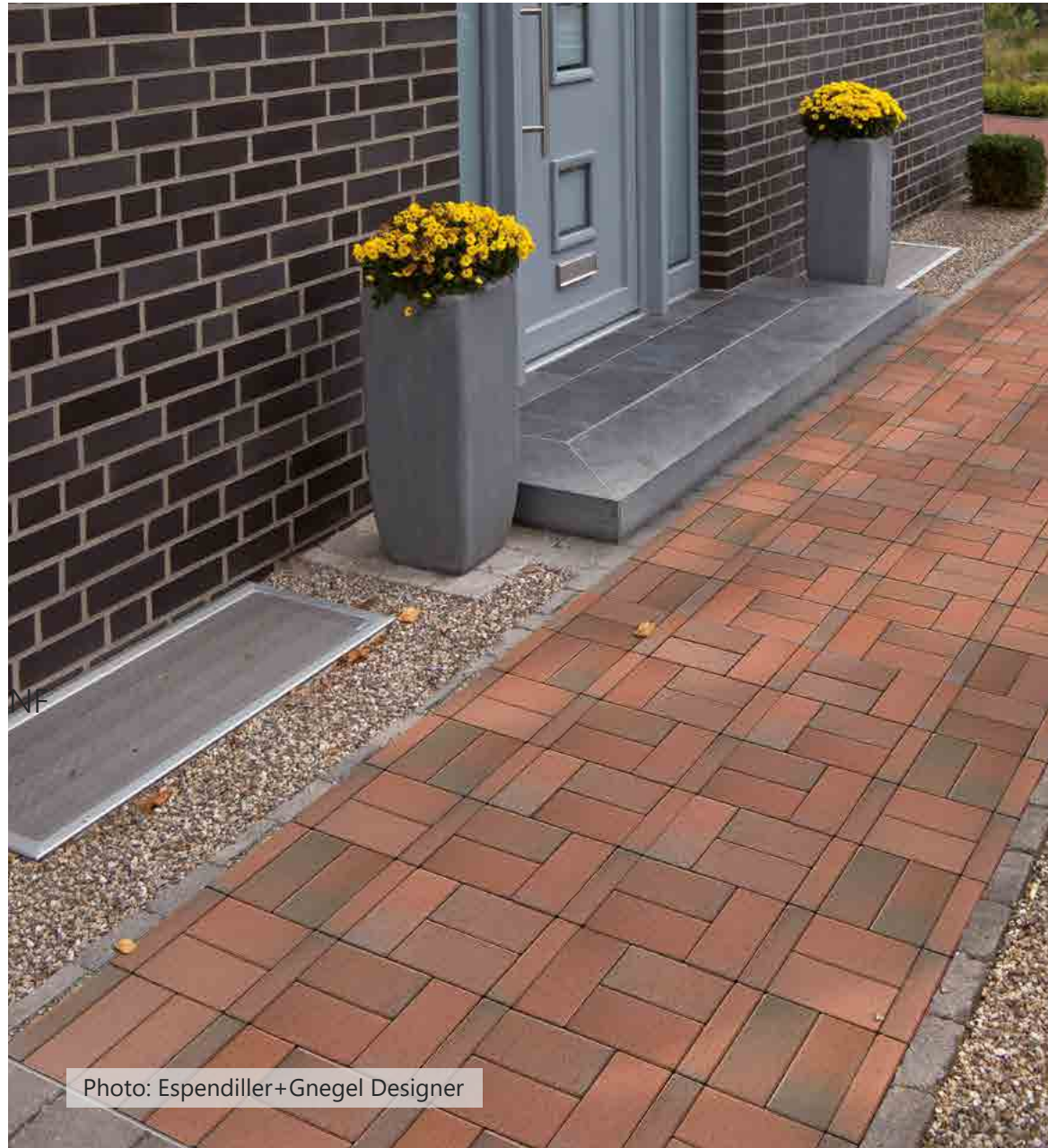


Photo: Esendiller+Gnegel Designer

Iron-melt varicoloured flamed



Foto: Esendiller+Gnegel Designer





Mix of 2 different colours

Police headquarter Charleroi, Belgium
Colours: Red-nuanced, Blue glazed (Special production)



Variations in colour, play of colours and proportions may be possible due to production/printing reasons.



Photo: Ependiller+Gnegel Designer



Mix of 2 different colours

Svendborg, Denmark | Format: 240 x 78 x 71 mm
Colours: Malmö, Gotland



Variations in colour, play of colours and proportions may be possible due to production/printing reasons.



Photo: SteffenSten



Photo: Kirstine Autzen

Mix of 5 different colours

Center of Odense, Denmark | Format: 296 x 71 x 71 mm
Colours: Lichtocker coal, Weizengelb coal, Aschegrau coal, Malmö, Gotland



Photo: SteffenSten

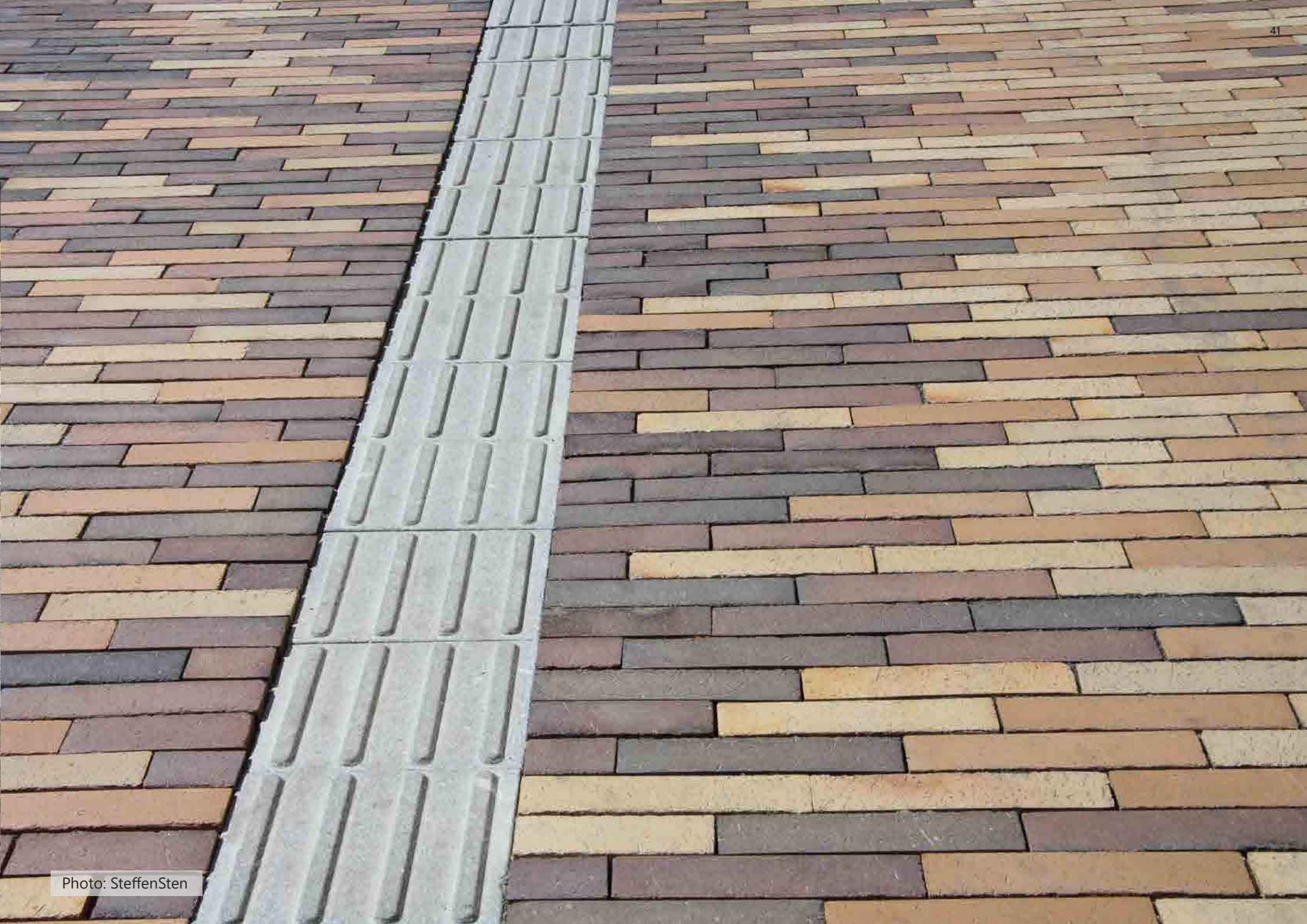


Photo: SteffenSten



Mix of 3 different colours

Beach promenade Wenduine, Belgium | Format: 236 x 78 x 80 mm
Colours: Red-nuanced, Leather-coloured nuanced, Brown-nuanced



Photo: Ependiller+Gnegel Designer

Grass pavers



Grass pavers | Photo: Fotoatelier Bernhard

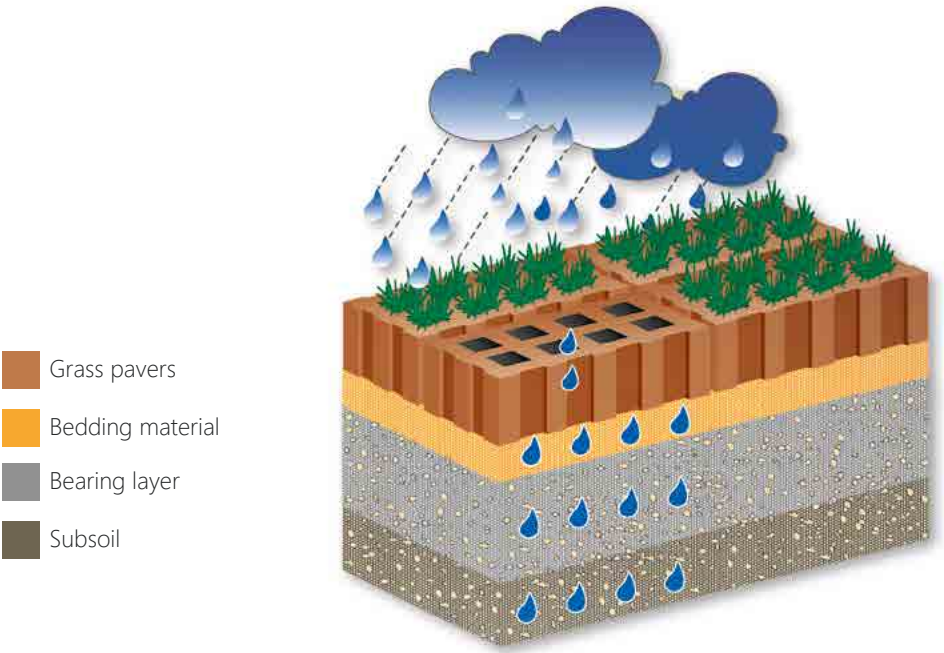


Grass pavers | Photo: Fotoatelier Bernhard

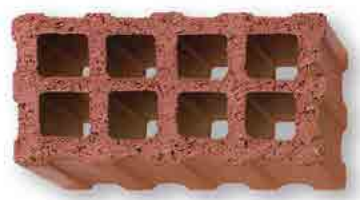
Wherever there is a green space that needs open infiltration and concurrently a solid, trafficable pavement installation, grass-pavers are the best choice.

Infiltration

An open infiltration laying is also possible with ABC quadrat and rectangular pavement clinkers. The stones should be laid with a 3 mm infiltration joint or a 5 mm grass joint.



- Grass pavers
- Bedding material
- Bearing layer
- Subsoil



Unsealed areas (special public funding measures possible)



Unsealed areas (special public funding measures possible)

Grass pavers

Surface infiltration via grass paversgrass pavers allow a pervious area of 30% - 45% in order to let rain (or snow fall) drain directly.

Accomplishment

- Filling material: mixture of approx. 15% surface soil (substrate), 35% sand 0/4 mm and 50% split 2/5 mm sowed in with a robust grass type
- Marginal areas which have to be drained, too, have to be in a downward slope towards the grass pavers

Application areas

Yard areas, residential paths, car parks, emergency access roads, campsites, terraces, paths and tree edges.

Aqua-Transit pavers

The Aqua-Transit pavers can be used wherever open infiltration and a solid, trafficable paving structure are required.

Accomplishment

- Filling of the openings according to the size with split 1/3 mm or 2/5 mm
- Joint and bedding material should be identical

Application areas

Yard areas, residential paths, cycle lanes, pedestrian and private areas and boundaries around trees for the purpose of aeration. The open infiltration subbase should be adjusted to the expected demands of the floor space.

Clay pavers with shortened spacers

SPACERS SPEED UP THE LAYING PROCESS

Tested by us – laying pavers becomes easier and quicker.
Laying performance increases by about 30%.

Summary

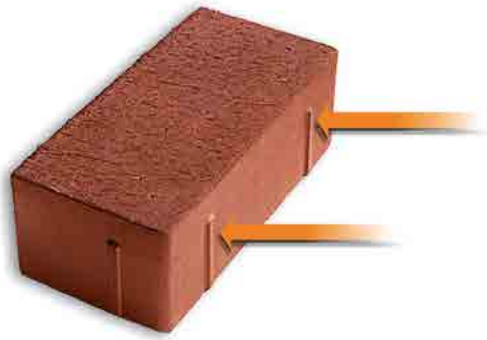
Laying pavers with adjusted or tapered spacers significantly eases work processes.
Rapid fixation of clinkers saves time, also in regards to personal contribution.

Densely mounted

The pavers can be densely mounted in a short time. Adjusted spacers fully disappear in the filled in joint pattern. The surface remains homogenous. Fixing strings lengthwise and crosswise ensures straight joint patterns.

Edge protection is included

Safe is safe! The adjusted spacers protect the pavement from spalling. Fully filling the joints, as well as a stable foundation are prerequisites.



Shortened spacers always predetermine joint dimensions which allow clay pavers to be densely mounted in no time.

Clay pavers for heavily loaded areas.

The 80 mm clay paver with small chamfer and shortened spacer is particularly suitable for traffic areas used by vehicles and for cycling and walking paths.



200 x 100 x 80 mm clay pavers with small chamfer and shortened spacers



Smooth surface

Bar pavers with edge protection

TAPERED SPACERS

ON THE BAR PAVERS IN LONG FORMAT

Tapered spacers combined with a chamfer protect the pavement clinkers from spalling.



Peeled surface



Tapered spacers combined with a mini chamfer protect the clay pavers from spalling.



Shaped pavers and formats

Bar pavers

with or without chamfer edges

Formats



200 x 78 mm
240 x 78 mm
292 x 71 mm
296 x 71 mm

Other formats on request

Rectangle pavers

with or without chamfer edges

Formats



200 x 100 mm
240 x 118 mm
300 x 150 mm
200 x 150 mm

Other formats on request

Square pavers

with or without chamfer edges

Formats



200 x 200 mm

Pavers with adjusted spacers

Formats



Bar pavers with adjusted
spacers

Bar pavers with tape-
red spacers

200 x 100 mm
240 x 118 mm
200 x 150 mm
292 x 71 mm
296 x 71 mm

Clay pavers with adjusted
spacers

Other formats on request

Half clay pavers

with middle chamfer, pre-cut or pre-scored

Formats



200 x 100 mm
240 x 118 mm

Shaped pavers

Formats



240 x 115 mm
300 x 100 mm

Other formats on request

Furrow- and Board pavers

Formats

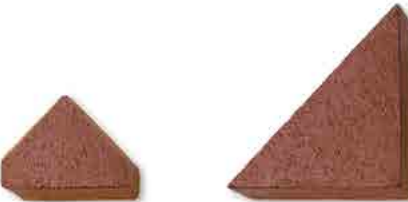


300 x 120 x 62 mm (Furrow pavers)
240 x 200 x 62 mm (Board pavers)

Bishop caps

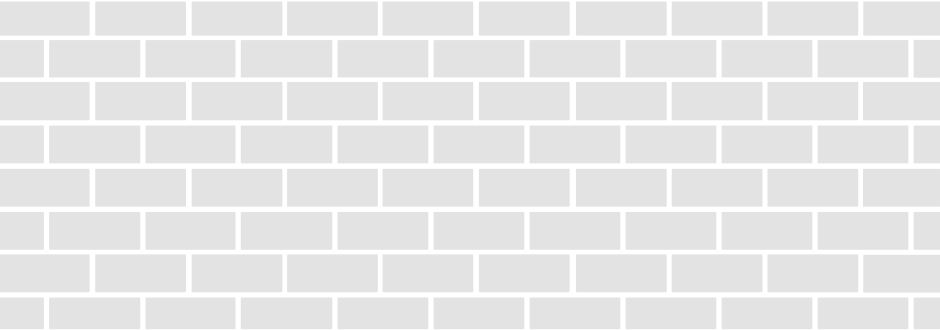
Formats

suitable for rectangle and square pavers

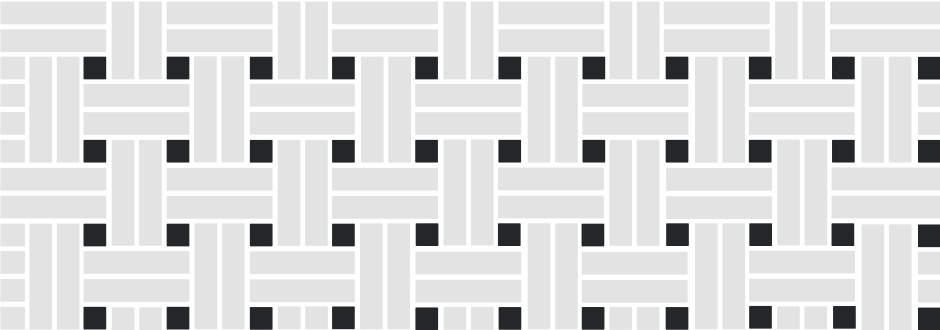


Laying patterns

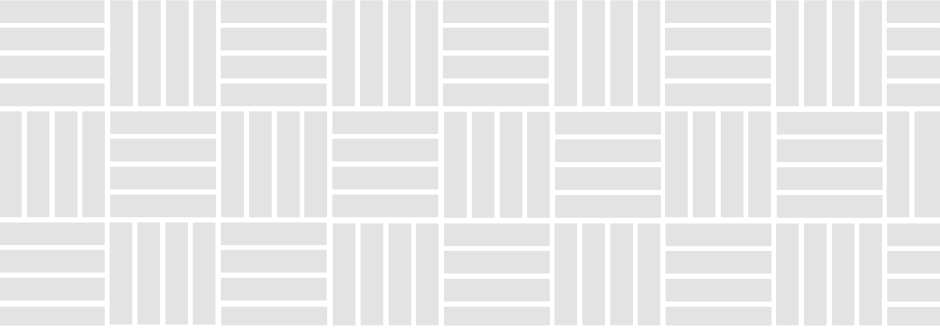
Stretching bond



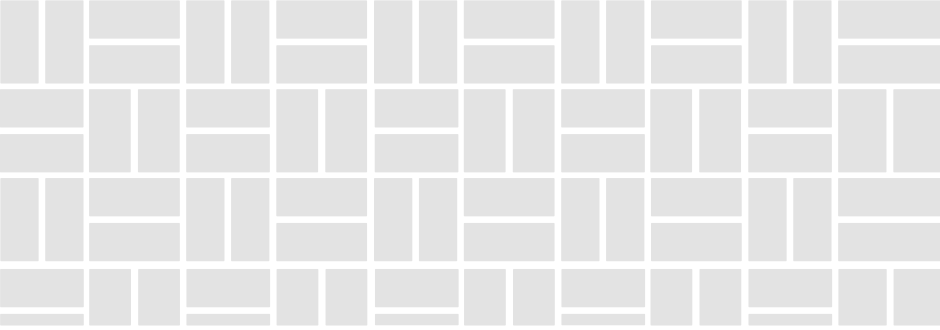
Braiding bond



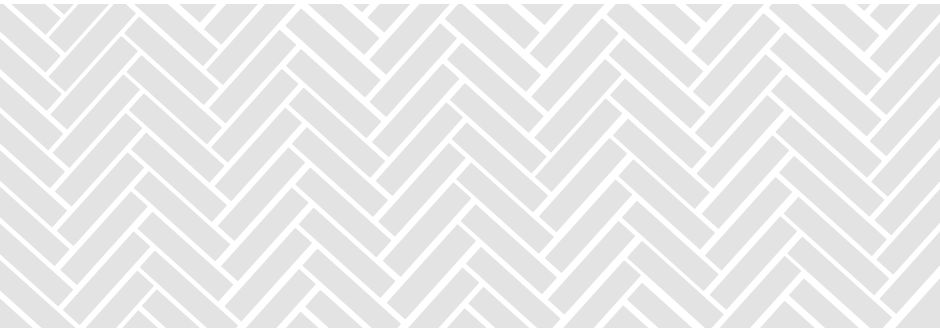
Block bond



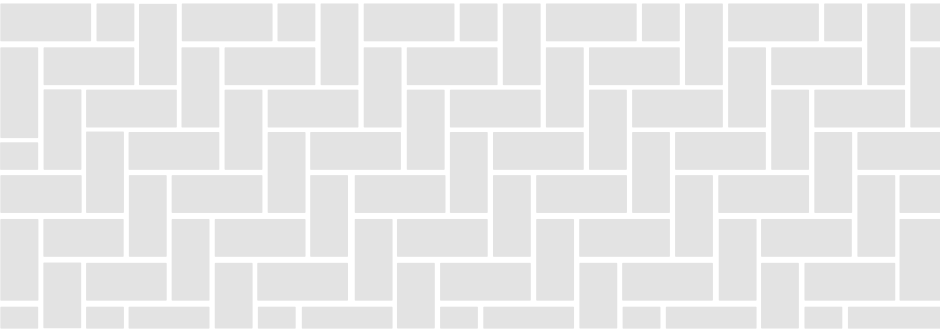
Block- and parquet bond



Fish bone bond



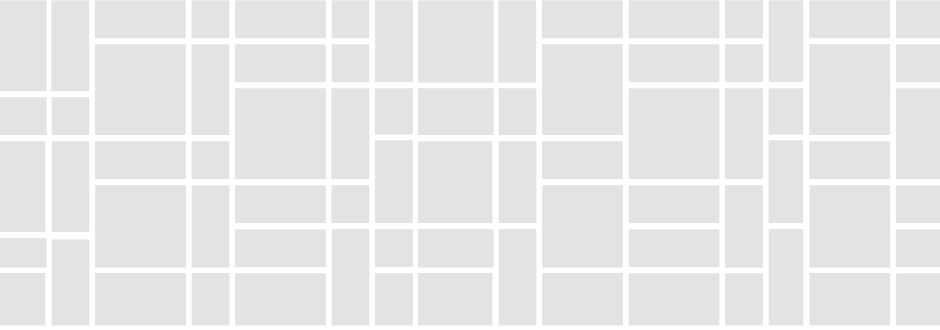
Ellbow bond



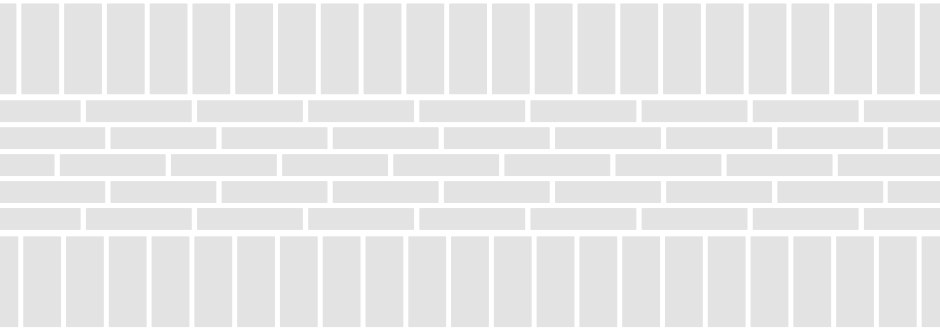
Laying mix



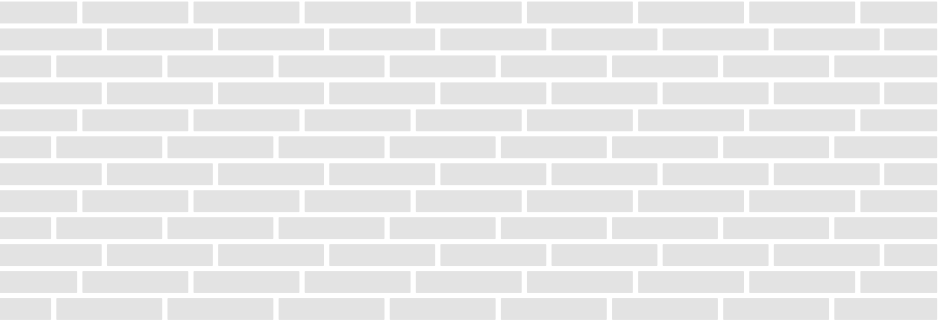
Laying mix



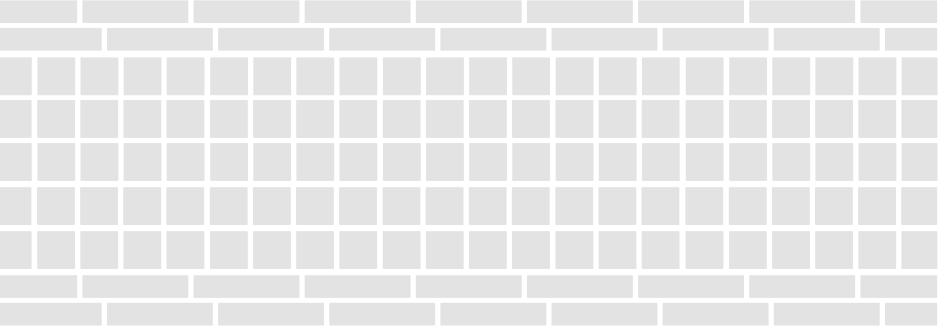
Laying mix



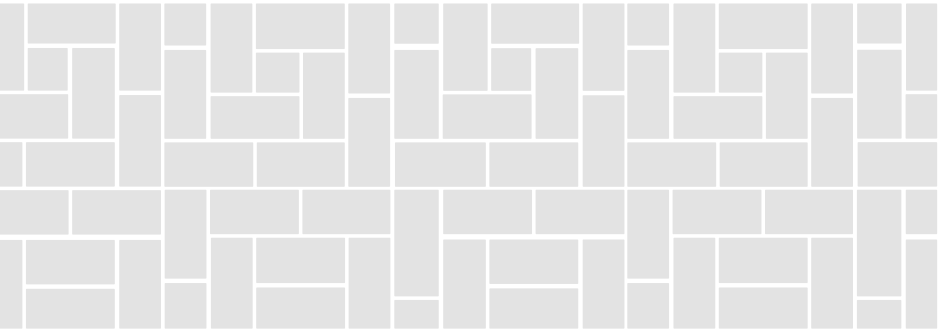
Laying mix




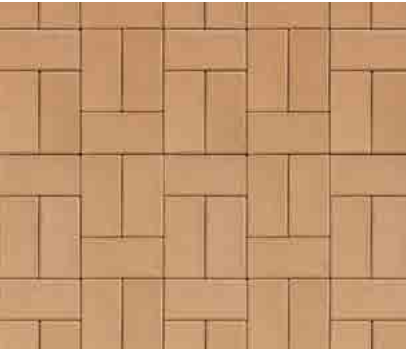


Laying mix



Middle stone bond



Colour-/Format range

	Colima beige-grey	Leather-coloured nuanced	Antique yellow coal	Copenhagen yellow coal
				
Formats				
200 x 100 x 45 mm	on request	on request	-	-
200 x 100 x 52 mm	●	●	on request	-
200 x 100 x 62 mm	on request	on request	on request	-
200 x 100 x 71 mm	on request	on request	on request	-
200 x 100 x 80 mm Small chamfer, shortened spacers	-	on request	-	-
240 x 118 x 52 mm	on request	on request	on request	-
240 x 118 x 62 mm	-	on request	on request	-
240 x 118 x 71 mm	-	-	-	-
200 x 150 x 62 mm	on request	on request	on request	-
300 x 150 x 62 mm	-	-	-	-
200 x 200 x 52 mm	-	on request	-	-
200 x 200 x 62 mm	-	-	-	-
215 x 105 x 52 mm	-	on request	-	-
215 x 105 x 62 mm	-	on request	-	-
200 x 78 x 52 mm	on request	on request	on request	-
240 x 78 x 52 mm	on request	on request	on request	-
292 x 71 x 71 mm	-	-	-	on request
292 x 71 x 52 mm	-	-	-	on request
296 x 71 x 71 mm shortened spacers	on request	-	-	on request

Variations in colour, play of colours and proportions may be possible due to production/printing reasons.



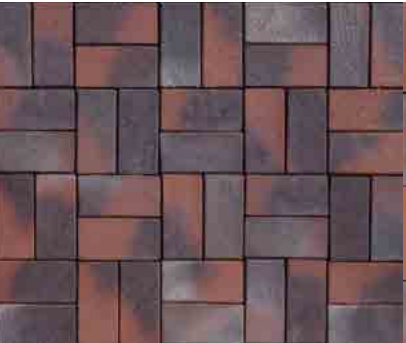

	Mediterran	Ember orange-yellow coal	Autumn leaf light	Black-brown	Kiel heath-varicoloured
					
Formats					
200 x 100 x 45 mm		-	on request	●	●
200 x 100 x 52 mm	●	on request	on request	●	●
200 x 100 x 62 mm		on request	on request	on request	on request
200 x 100 x 71 mm		on request	on request	on request	on request
200 x 100 x 80 mm Small chamfer, shortened spacers	-	-	-	on request	on request
240 x 118 x 52 mm		on request	-	-	-
240 x 118 x 62 mm		on request	on request	on request	-
240 x 118 x 71 mm		-	-	on request	-
200 x 150 x 62 mm		on request	on request	on request	on request
300 x 150 x 62 mm		-	-	-	-
200 x 200 x 52 mm		-	-	on request	on request
200 x 200 x 62 mm		-	-	on request	on request
215 x 105 x 52 mm		on request	on request	on request	-
215 x 105 x 62 mm		on request	on request	on request	-
200 x 78 x 52 mm		on request	on request	on request	on request
240 x 78 x 52 mm		on request	on request	on request	-
292 x 71 x 71 mm		-	-	-	-
292 x 71 x 52 mm		-	-	-	-
296 x 71 x 71 mm shortened spacers	-	-	-	-	-

Clay pavers „on request“ can be produced for the contract sector if larger quantities are purchased.

Colour-/Format range

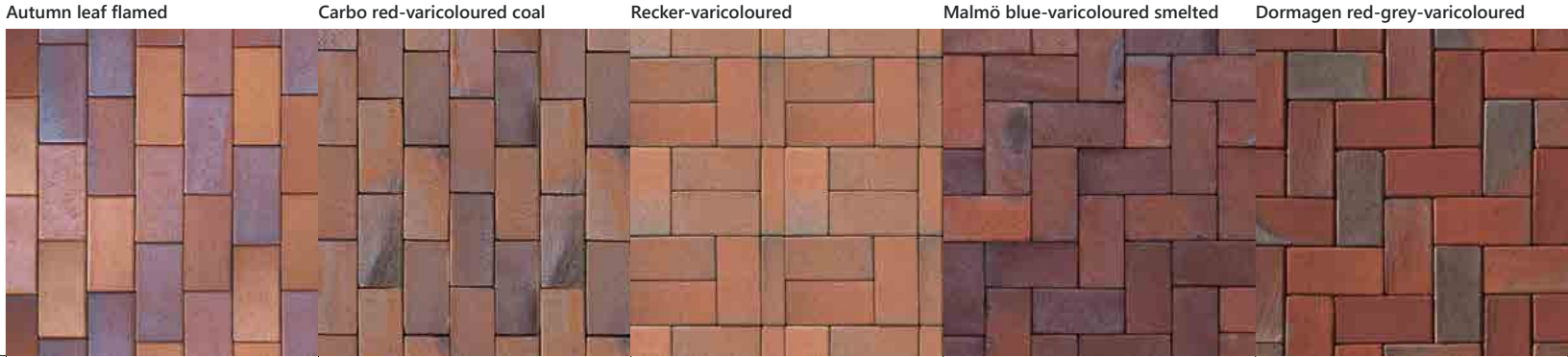
	Gotland blue-brown smelted	Berlin blue-anthracite	Glasgow black-nuanced	Luna lava-grey	Atlantis anthracite-silver grey
					
Formats					
200 x 100 x 45 mm	-	●	●	on request	●
200 x 100 x 52 mm	●	●	●	●	●
200 x 100 x 62 mm	on request	on request	on request	on request	on request
200 x 100 x 71 mm	on request	on request	on request	on request	on request
200 x 100 x 80 mm Small chamfer, shortened spacers	-	on request	-	-	on request
240 x 118 x 52 mm	on request	●	-	on request	on request
240 x 118 x 62 mm	on request	-	-	-	on request
240 x 118 x 71 mm	on request	-	-	-	-
200 x 150 x 62 mm	on request	on request	-	on request	on request
300 x 150 x 62 mm	on request	on request	-	-	on request
200 x 200 x 52 mm	-	-	-	-	-
200 x 200 x 62 mm	-	-	-	-	-
215 x 105 x 52 mm	on request	on request	on request	-	on request
215 x 105 x 62 mm	on request	on request	on request	-	on request
200 x 78 x 52 mm	on request	on request	on request	on request	on request
240 x 78 x 52 mm	on request	on request	on request	on request	on request
292 x 71 x 71 mm	on request	-	on request	on request	on request
292 x 71 x 52 mm	●	-	on request	-	-
296 x 71 x 71 mm shortened spacers	●	on request	on request	-	on request

Variations in colour, play of colours and proportions may be possible due to production/printing reasons.

	Lübeck blue-brown flamed	Midnight blue	Gdansk dark red-anthracite	Opalblue flamed
				
Formats				
200 x 100 x 45 mm	on request	-	on request	-
200 x 100 x 52 mm	on request	●	on request	on request
200 x 100 x 62 mm	on request	on request	on request	-
200 x 100 x 71 mm	on request	on request	on request	-
200 x 100 x 80 mm Small chamfer, shortened spacers	-	-	-	-
240 x 118 x 52 mm	-	●	on request	on request
240 x 118 x 62 mm	-	on request	-	on request
240 x 118 x 71 mm	-	on request	-	on request
200 x 150 x 62 mm	on request	on request	on request	on request
300 x 150 x 62 mm	on request	on request	-	-
200 x 200 x 52 mm	-	-	-	-
200 x 200 x 62 mm	-	-	-	-
215 x 105 x 52 mm	on request	on request	-	on request
215 x 105 x 62 mm	on request	on request	-	on request
200 x 78 x 52 mm	on request	on request	on request	on request
240 x 78 x 52 mm	on request	on request	on request	on request
292 x 71 x 71 mm	on request	on request	on request	-
292 x 71 x 52 mm	-	on request	-	-
296 x 71 x 71 mm shortened spacers	-	-	-	-

Clay pavers „on request“ can be produced for the contract sector if larger quantities are purchased.

Colour-/Format range



Formats	Autumn leaf flamed	Carbo red-varicoloured coal	Recker-varicoloured	Malmö blue-varicoloured smelted	Dormagen red-grey-varicoloured
200 x 100 x 45 mm	on request	-	●	-	on request
200 x 100 x 52 mm	on request	on request	●	●	on request
200 x 100 x 62 mm	on request	on request	on request	on request	on request
200 x 100 x 71 mm	on request	on request	on request	on request	on request
200 x 100 x 80 mm Small chamfer, shortened spacers	-	-	on request	on request	-
240 x 118 x 52 mm	on request	on request	●	on request	on request
240 x 118 x 62 mm	on request	on request	-	on request	-
240 x 118 x 71 mm	-	on request	-	on request	-
200 x 150 x 62 mm	on request	on request	on request	on request	on request
300 x 150 x 62 mm	-	-	on request	on request	-
200 x 200 x 52 mm	-	-	on request	-	-
200 x 200 x 62 mm	-	-	on request	-	-
215 x 105 x 52 mm	on request	on request	on request	on request	-
215 x 105 x 62 mm	on request	on request	on request	on request	-
200 x 78 x 52 mm	on request	on request	on request	on request	on request
240 x 78 x 52 mm	on request	on request	on request	on request	on request
292 x 71 x 71 mm	-	-	-	on request	-
292 x 71 x 52 mm	-	-	on request	●	-
296 x 71 x 71 mm shortened spacers	-	-	-	●	-

Variations in colour, play of colours and proportions may be possible due to production/printing reasons.



Formats	Dark-red	Cologne red flamed	Iron-melt varicoloured flamed	Old-varicoloured flamed	Red-nuanced
200 x 100 x 45 mm		on request	-	-	●
200 x 100 x 52 mm		●	●	on request	●
200 x 100 x 62 mm		on request	on request	on request	on request
200 x 100 x 71 mm		on request	on request	on request	on request
200 x 100 x 80 mm Small chamfer, shortened spacers		-	-	-	on request
240 x 118 x 52 mm		on request	●	on request	●
240 x 118 x 62 mm		-	on request	on request	on request
240 x 118 x 71 mm		-	on request	on request	on request
200 x 150 x 62 mm		on request	on request	on request	on request
300 x 150 x 62 mm		-	-	-	on request
200 x 200 x 52 mm		-	-	-	on request
200 x 200 x 62 mm		-	-	-	on request
215 x 105 x 52 mm		-	on request	on request	on request
215 x 105 x 62 mm		-	on request	on request	on request
200 x 78 x 52 mm		on request	on request	on request	on request
240 x 78 x 52 mm		on request	on request	on request	on request
292 x 71 x 71 mm		-	-	-	on request
292 x 71 x 52 mm		-	-	-	on request
296 x 71 x 71 mm shortened spacers		-	-	-	●

Clay pavers „on request“ can be produced for the contract sector if larger quantities are purchased.

Our product range



Facing bricks Brick strips NORDIC Clay pavers Clinker roof tiles Floor ceramics



DIN EN 771-1
(DIN V 20000-401)
DIN 4051
DIN EN 1344



Production plants of the ABC Klinker Group



Headquarter
ABC-Klinkergruppe
Grüner Weg 8 · D-49509 Recke
Tel. +49 (0) 54 53 / 93 33 0
abc@abc-klinker.de · www.abc-klinker.de

Klinker- und Keramikwerke · A. Berentelg & Co. KG
Klinkerwerk Hörstel
Dornierstraße 11 · D-48477 Hörstel
Phone +49 (0) 54 59 / 93 43 0
Show room „Ringofen“ in the Plant
Tel. +49 (0) 54 59 / 93 43 11

Klinker- und Keramikwerke · A. Berentelg & Co. KG
Klinkerwerk Schüttorf
An der Ziegelei 6 · D-48465 Schüttorf
Phone +49 (0) 59 23 / 96 00 0

Recker Ziegelwerk · Berentelg & Hebrok OHG
Mettinger Straße 135 · D-49509 Recke
Phone +49 (0) 54 53 / 9 30 50

Hollager Ziegelwerk · Berentelg & Hebrok GmbH & Co. KG
Hollager Straße 106 · D-49134 Wallenhorst-Hollage
Phone +49 (0) 54 07 / 8 30 40

KDW-Klinkerdachziegelwerk · GmbH & Co. KG
Ziegeleiweg 1b · D-49170 Natrup-Hagen
Phone +49 (0) 54 05 / 6 19 19 60

ABC-Keramik · H & R Berentelg GmbH & Co. KG
Industriestraße 10 · D-49492 Westerkappeln
Phone +49 (0) 54 56 / 93 47 0

